

MiNDFOOD season of

THE MASTER BUILDER

By Henrik Ibsen

A new version by Colin McColl

AUCKLAND
THEATRE
COMPANY

ASB
Partners with passion.



MiNDFOOD



Colin McColl
Director

Welcome to our rehearsal room showing of the MiNDFOOD season of *The Master Builder*.

When the COVID-19 lockdown made it impossible for us to present the work onstage, we decided to keep exploring this enigmatic and elusive late play of Ibsen's in the rehearsal room.

Written in 1892 immediately after *Hedda Gabler*, the play represents a shift in Ibsen's form from the realism of his "problem" plays like *Hedda Gabler*, *Ghosts*, *Enemy of the People* and *A Doll's House* to the expressionism of his final theatre works. In *The Master Builder*, Ibsen is experimenting with a less rigid form.

At the core of the play is the hauntingly complex relationship between Solness and Hilde; between man and woman; youth and age; between a remorseful guilt-ridden soul and an aggressively amoral pagan will. It works on many different levels – the realistic, the mythic, the psychological and the subconscious. Although it doesn't give up its secrets easily, *The Master Builder* continues to fascinate because of the countless interpretations it offers up. It's been thrilling to explore them with this stellar cast.

Enjoy.

PRESENTING PARTNER:

MiNDFOOD

PRINCIPAL FUNDERS:

 creative *nz*
ARTS COUNCIL OF NEW ZEALAND / TOI AOTEAROA

 Auckland
Council

**AUCKLAND
THEATRE
COMPANY**

ASB
Partners with passion.



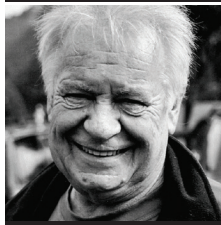
ANDREW GRAINGER



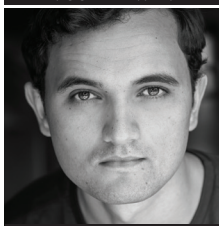
HERA DUNLEAVY



NICOLA KAWANA



IAN MUNE



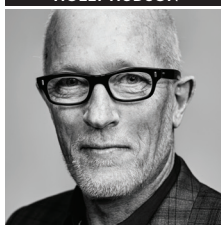
JUSTIN ROGERS



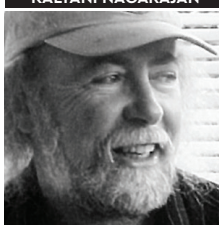
HOLLY HUDSON



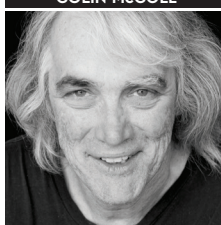
KALYANI NAGARAJAN



COLIN McCOLL



TONY RABBIT



JOHN GIBSON



NIC SMILLIE

CAST

Solness — **Andrew Grainger**
Mrs Solness — **Hera Dunleavy**
Dr Herdal — **Nicola Kawana**
Brovik — **Ian Mune**
Ragnar — **Justin Rogers**
Kaja Fosli — **Holly Hudson**
Hilde Wangel — **Kalyani Nagarajan**

CREATIVE

Director — **Colin McColl**
Set and Lighting Designer — **Tony Rabbit**
Composer and Sound Designer —
John Gibson
Costume Designer — **Nic Smillie**

MUSICIANS

John Gibson and Marcel Bear

ENSEMBLE

**Adeline Esther, George Maunsell,
Joseph Nathan, Travis Graham,
Fabian MacGregor, Salome Grace Neely,
Nadine Kemp, Ben Lamb, Lucas Haugh,
Matthew Kereama**

PRODUCTION

Production Manager — **Andrew Malmo**
Company Manager — **Nicole Sarah**
Stage Manager — **Maddy Powell**
Assistant Stage Manager —
Chiara Niccolini
Technical Manager — **Kevin Greene**
Lighting Operator — **Ruby van Dorp**
Sound Operator — **Andrew Furness**
Props Master — **Selina Ershadi**
Wardrobe Supervisor — **Sheridan Miller**
Director of Photography — **Adam Luxton**
Sound Recordist — **Ant Nevison**
B-Cam Operator — **Riki Reinfeld**
C-Cam Operator — **Andrew Blackman**
Set Construction — **Camelspace**

PRODUCTION SUPPLIERS



AUCKLAND THEATRE COMPANY WOULD LIKE TO THANK THE FOLLOWING FOR THEIR HELP WITH THIS PRODUCTION: Big thanks to Marcel Bear for the shimsaw instrument, Screen Auckland, Auckland Council, ASB Waterfront Theatre FOH staff, ASB Waterfront Theatre technical team, Metropolitan Rentals, Stephen Baker, Imagezone, Kennards Hire.

ABOUT THE SHIMSAW – MARCEL BEAR

The shimsaw combines the two-dimensional aspect of a flat vibrating strip of thin steel with the traditional tensioned string layout to make a new sound source. It was inspired by my intrigue at the sound of a sawblade that I heard at my dad's factory in Mt Roskill. It was here that the shimsaws were built. When plugged into an amp the entire contraption is a sensitive pickup that translates the player's intentions into otherworldly sounds. The shimsaw used in this production is the seventh in an evolved series of one-off instruments, all with a vibrating strip of steel at their heart.

The premiere of the MiNDFOOD season of *The Master Builder* opened on 23 June at the Auckland Theatre Company Dominion Road Studios. Originally a stage show that was billed as the fourth Auckland Theatre Company mainstage production for 2020, the production has been reworked as a filmed studio presentation, a hybrid of stage and screen because of the 2020 COVID-19 pandemic. The production is approximately 90 minutes with no interval. The filmed presentation will premiere at 7:30pm, 8 August on ATC YouTube and will be available to view for free until 30 August 2020.